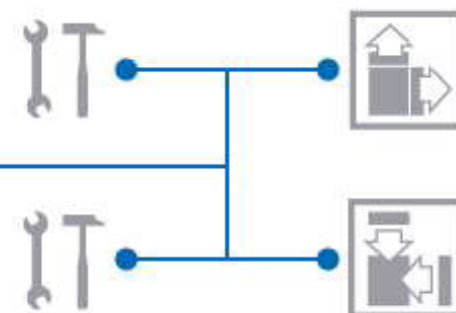




ASCM 12 C (7 116 10)





Technical data

All the technical data can be found in the operating instructions for the model.

Tests

Up-to-date test data and test instructions after repair can be found on the FEIN Extranet (Customer Service → Repair Guides).

Lubricants / Auxiliary substances

The lubricants or auxiliary substances and their container sizes available from FEIN can be found on the FEIN Extranet (Customer Service → Repair Guides).

Lists of spare parts

Lists of spare parts and exploded views are available online at www.fein.com



Please note

These instructions are only intended for persons with suitable technical training. It is assumed that the reader has mechanical and electrical training.

Only use original FEIN spare parts.

Provisions

Please note that power tools may only be repaired, maintained and checked by a trained electrician, as improper repair can result in serious risks to the user.

The provisions set out in **DIN VDE 0701-0702** should be observed after repairs.

The relevant accident prevention regulations of the employer's liability insurance associations are to be observed when commissioning.

The German Equipment and Product Safety Act [ProdSG] applies for correct use.

Outside Germany, the regulations applicable in the relevant country must be observed.

Lubricants and auxiliary substances required



Please note

No lubricants and auxiliary substances are required for fitting the ASCM 12 machines.



Fault	Cause	Remedy
LED not lighting up	Cable defective	Check cable
	LED defective	Check LED
	Electronics defective	Replace electronics
Rotor not moving	Mechanical defect	Replace rotor/ stator
	Cable defective	Replace cable
	Toggle switch defective	Replace toggle switch
	Switch defective	Replace switch
	Battery plug contacts have come loose	Check components
	Electronics defective	Replace electronics
Rotor only turns in one direction	Toggle switch defective	Replace toggle switch
	Switch defective	Replace switch
Unusual noise from gearbox (rattling)	Gearbox defective	Replace gearbox
Torque shut-off cannot be adjusted	Adjusting ring defective	Replace gearbox
Slide switch stiff	Slide switch dirty	Clean and lubricate slide switch
	Slide switch defective	Replace gearbox

ASCM 12

Troubleshooting



Fault	Cause	Remedy
Drill chuck jaws stuck	Drill chuck opened using machine drive	Replace drill chuck



Removing the holder



1. Unscrew the screw (1).
2. Remove the holder (2).

Tools:

- PH2 cross-tip screwdriver



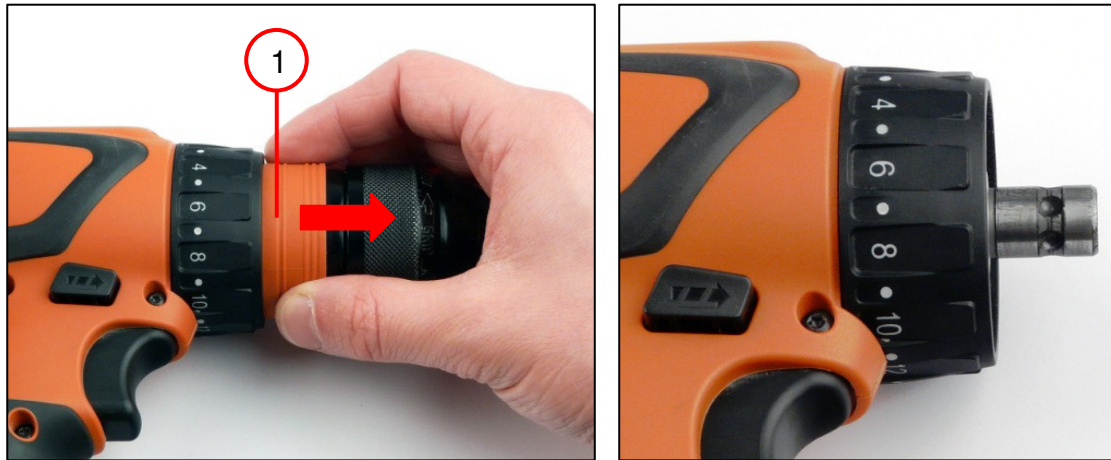
Removing the battery



1. Press and hold the catch (1).
2. Pull off the battery.



Removing the drill chuck



1. Pull out and hold the bottom of the drill chuck (1).
2. Pull off the drill chuck.



Removing the motor housing



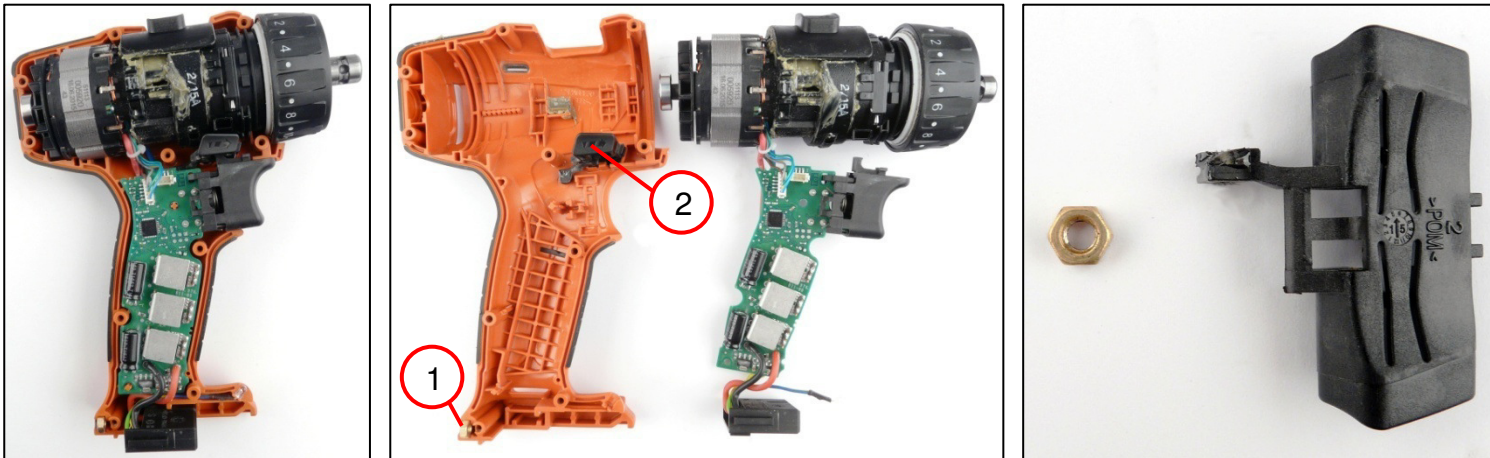
1. Unscrew the ten screws (1).
2. Cut through the type plate (2).
3. Remove the motor housing (3).

Tools:

- Torx T10
- Blade



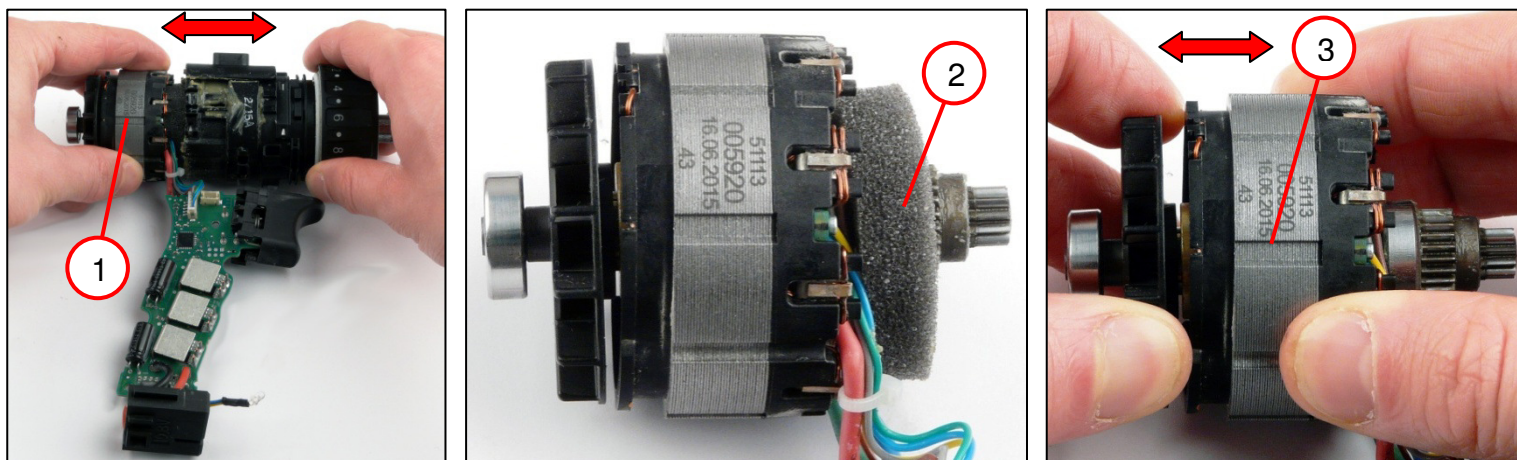
Removing the motor housing



1. Remove the motor and the electronics from the motor housing.
2. Remove the nut (1).
3. Remove the toggle switch (2).



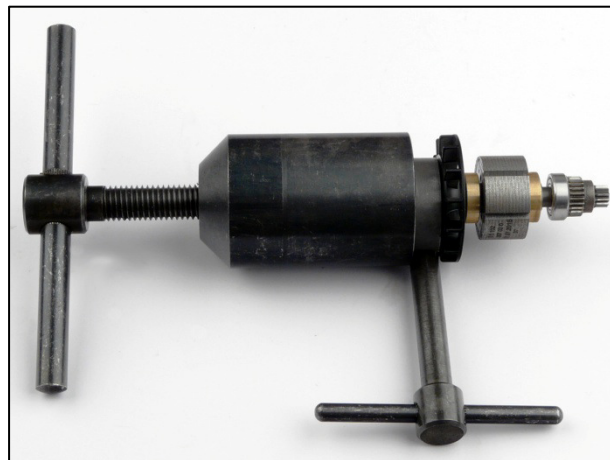
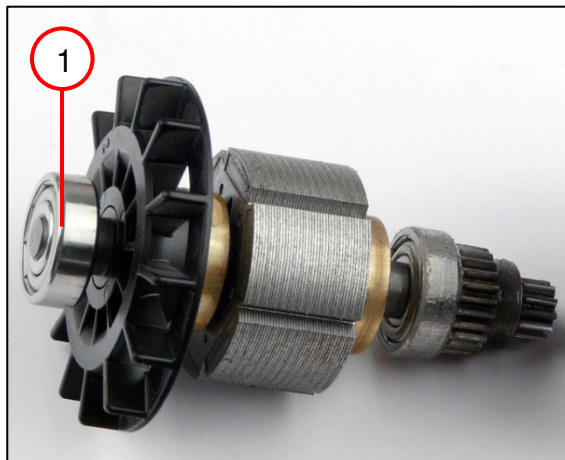
Removing the stator



1. Pull the stator (1) off the gearbox.
2. Remove the insulating ring (2).
3. Pull the stator (3) off the rotor.



Removing the rotor



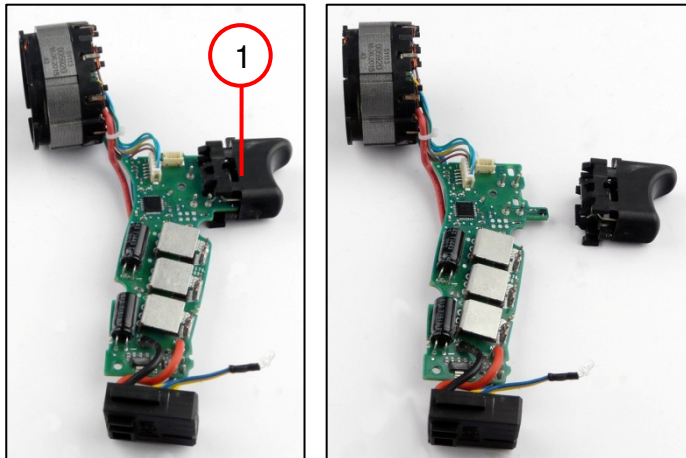
1. Pull off the grooved ball bearing (1).

Tools:

- Drawing-off socket cap
- Chuck cone 16 mm



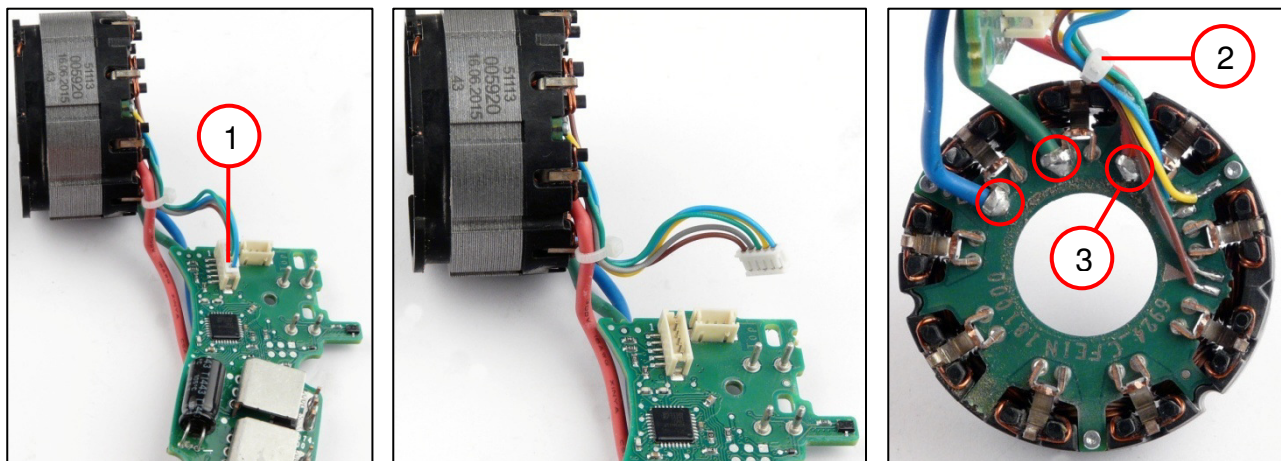
Removing the switch



1. Pull off the switch (1).



Removing the stator



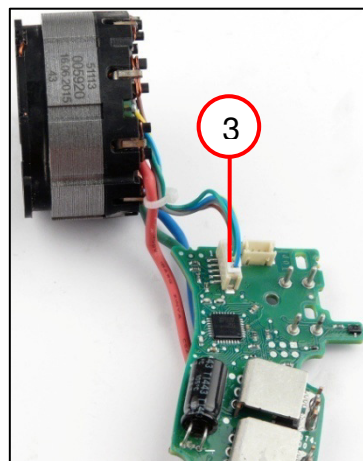
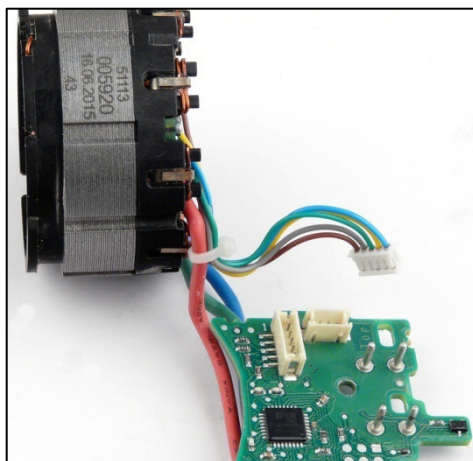
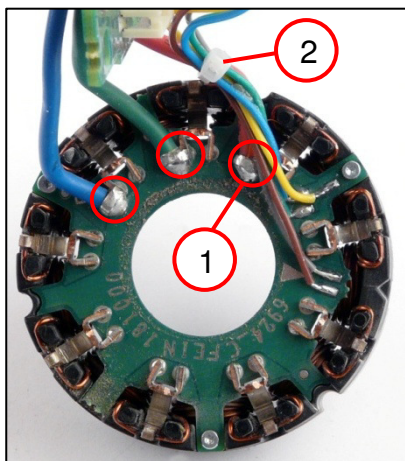
1. Pull off the plug (1).
2. Remove the cable tie (2).
3. Unsolder the cables (3).

Tools:

- Side-cutting pliers
- Soldering station



Fitting the stator



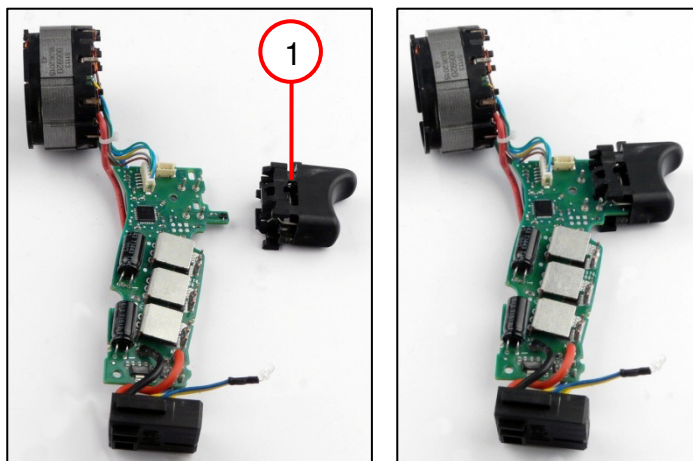
1. Solder the cables (1) as shown in connection diagram.
2. Fit the cable tie (2).
3. Connect the plug (3).

Tools:

- Soldering station
- Side-cutting pliers



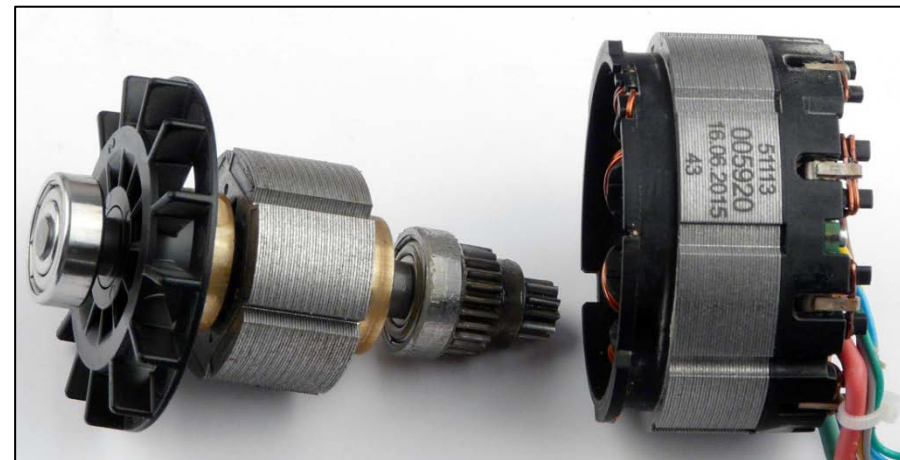
Fitting the switch



1. Fit the switch (1).



Fitting the rotor



1. Press the grooved ball bearing (1) onto the rotor.

Tools:

- Arbor press
- Sleeve
7 mm inner diameter
30 mm outer diameter



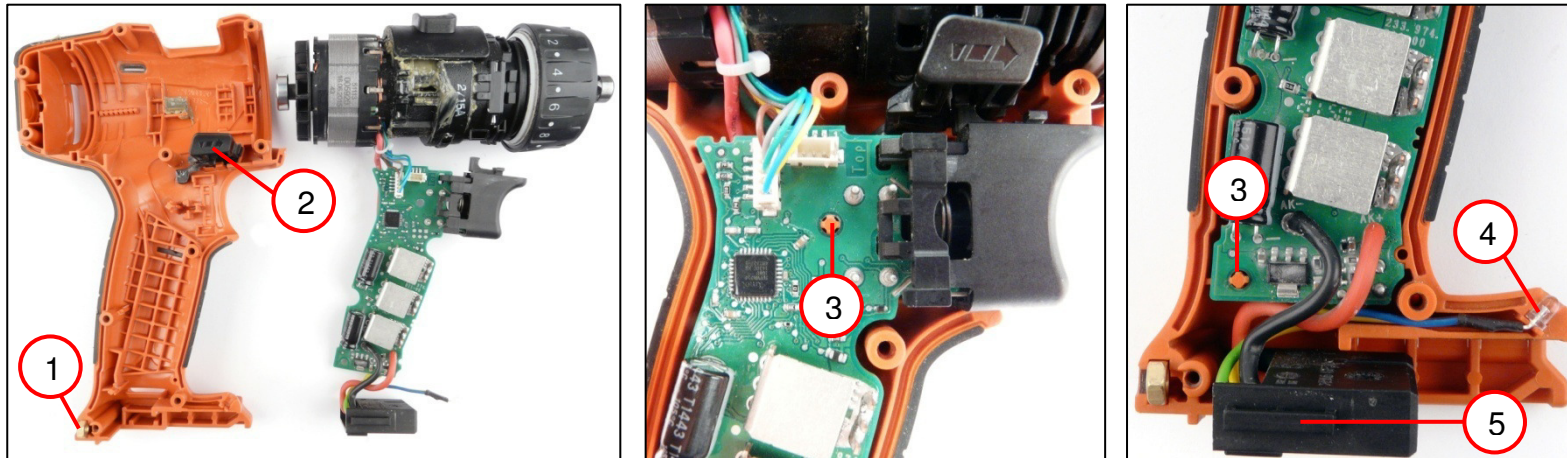
Fitting the stator



1. Slide the rotor (1) into the stator.
2. Position the insulating ring (2) on the gearbox.
3. Slide the motor (3) into the gearbox.



Fitting the motor housing



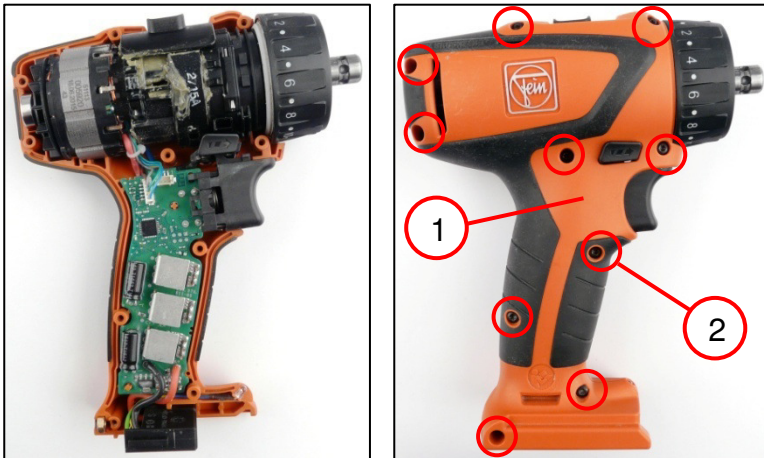
1. Insert the nut (1).
2. Insert the toggle switch (2).
3. Insert the motor and the electronics into the motor housing in the correct position.
 ☞ Observe the locks (3).
4. Insert the LED (4) and lay the cables.
5. Insert the plug (5).

Tools:

- Assembly aid



Fitting the motor housing



1. Fit the motor housing (1).
2. Screw in the ten screws (2) [1.2 Nm].

Tools:

- Torque wrench
T10



Fitting the drill chuck



1. Pull out and hold the bottom of the drill chuck (1).
2. Fit the drill chuck.



Fitting the battery



1. Slide on the battery (1).



Fitting the holder



1. Place the holder (1) on motor housing in the correct position.
2. Screw in the screw (2) [1.2 Nm].

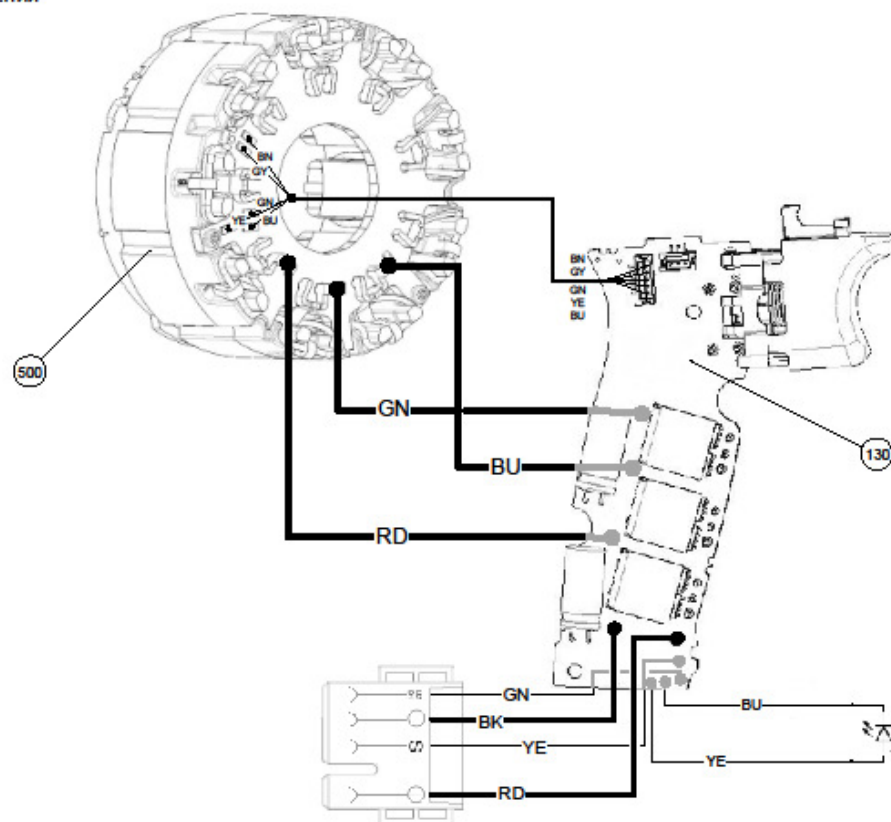
Tools:

- Torque wrench
PH2



Anschlussplan
Connection diagram
Esquemade conexiones
Schémade connexion
Схема соединений
接线图

7 116 10 – ASCM12 12V



3 41 21 000 071
16.09.2015

