

Repair instructions

ASW 10-6, 10-10, 14-14





Contents

- 1. Models described**
- 2. Technical data**
- 3. Provisions**
- 4. Tools required**
- 5. Lubricants and auxiliary substances required**
- 6. Disassembly**
- 7. Assembly**
- 8. Connection diagram**



1. Models described

These instructions describe how to repair the following models:

Model	Order no.
ASW 10-6	711240
ASW 10-6-2ST	711241
ASW 10-10	711242
ASW 10-10-2ST	711243
ASW 10-10-250	711244
ASW 14-14	711245



2. Technical data

Technical data

The complete technical data can be found in the operating instructions for the model.

Test data

Up-to-date test data for all models can be found on the FEIN Extranet.

Lubricants

Lubricants and container sizes available from FEIN can be found on the FEIN Extranet.

Lists of spare parts

Lists of spare parts and exploded views are available online at www.fein.com



3. Provisions

Provisions

Please note that power tools may only be repaired, maintained and checked by a trained electrician, as improper repair can result in serious risks to the user.

The provisions set out in *DIN VDE 0701-0702* should be observed after repairs.

Only use original FEIN spare parts!

The relevant accident prevention regulations of the employers' liability insurance associations are to be observed when commissioning.

The German Equipment and Product Safety Act applies for correct use.

Outside Germany, the regulations applicable in the relevant country must be observed!



4. Tools required

Standard tools

Torx 10 and 15 screwdrivers
Small slotted screwdriver
Cable hooks
Circlip pliers
Circlip pliers (ground)
Open-ended spanner 26 mm
Flat-nose pliers
Feeler gauge

Special tools

Torque wrench (supplied)



5. Lubricants and auxiliary substances required

Lubricants

Grease	0 40 123 01000	3.5 g
---------------	----------------	-------



6. Disassembly



1. Undo the retainer nut.
2. Remove angled head and take out drive.
3. Prise off the coloured ring.

Tools:

- Open-ended spanner 26 mm
- Slotted screwdriver



6. Disassembly



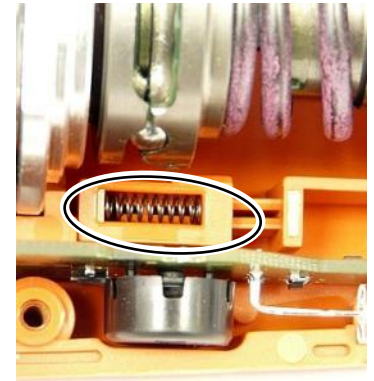
1. Loosen screws and take off upper housing section.

Tool:

-Torx 15 screwdriver



6. Disassembly



1. Carefully remove the electronic strip.
2. Use a screwdriver to lift up the clutch slightly.

NOTE

The small spring can easily fall out when the slide switch is dismantled.

3. Remove the slide switch.
4. Remove the spring.

Tools:

- Slotted screwdriver
- Flat-nose pliers



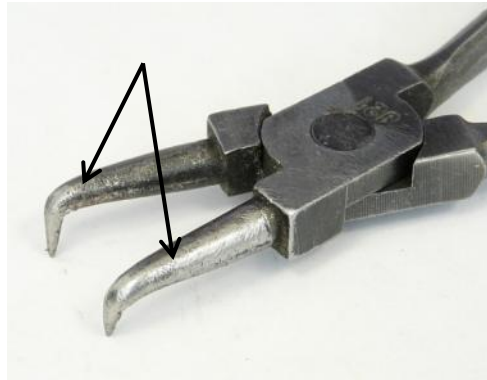
6. Disassembly



1. Remove the clutch.
2. Detach the straight pins from the flange.



6. Disassembly



1. Tension the spring fully to allow better access to the circlip.
2. Remove circlip.

NOTE

You need modified circlip pliers to dismantle the circlip.
The upper side of the pliers must be ground flat.

Tools:

- Torque wrench (supplied)
- Circlip pliers (ground)



6. Disassembly



NOTE

The compensating discs in front of and behind the ball bearings must be replaced in the same position on assembly. The discs are used to adjust the play between the slide switch and the switch ring on the clutch.

1. Remove the flange and take the disc(s) out of the flange.
2. Remove circlip.

NOTE

Always use a new circlip for reassembly.

3. Remove the ball bearings.
4. Remove discs.
5. Remove circlip.

Tool:

- Circlip pliers



6. Disassembly



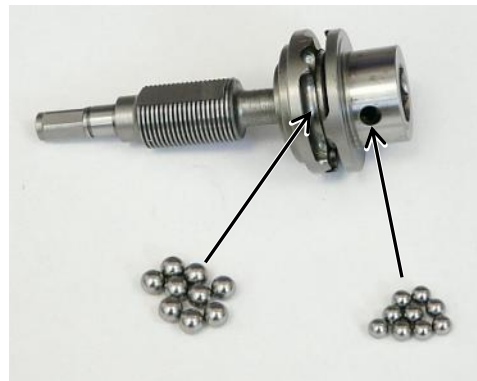
1. Release all the tension on the spring so that the adjusting ring can be unscrewed.
2. Unscrew the adjusting ring (left-handed thread).
3. Remove the ring and the spring.

Tool:

-Torque wrench



6. Disassembly



1. Remove the large balls (9) from the inner clutch ring.
2. Shake the small balls (9) out of the hole in the outer clutch ring.
3. Remove both clutch rings.

NOTE

Degreasing the clutch before disassembly makes it easier to remove the balls.



6. Disassembly



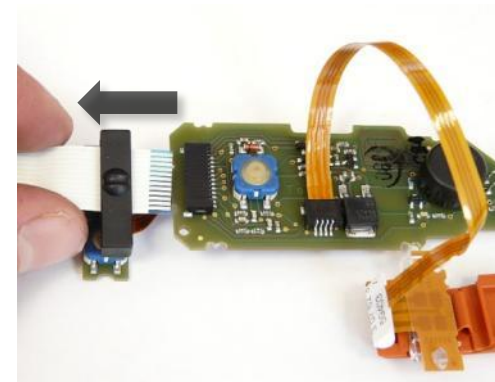
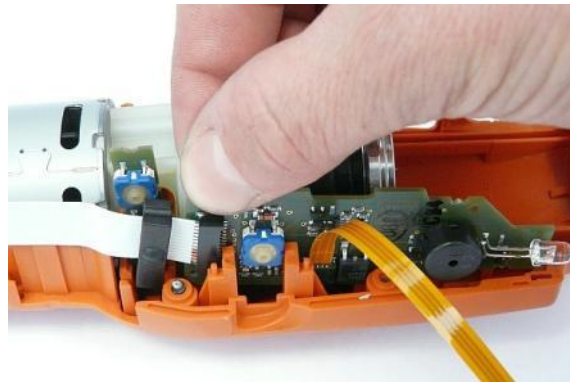
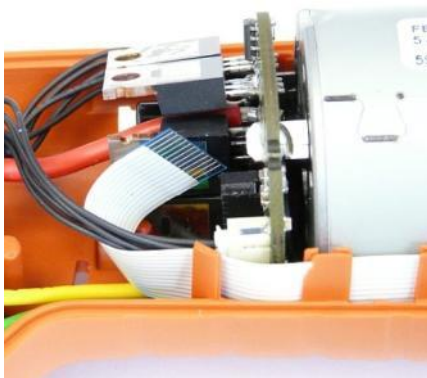
1. Remove both switch pushbuttons.
2. Remove the leaf spring.
3. Remove the rocker switch.

Tool:

-Flat-nose pliers



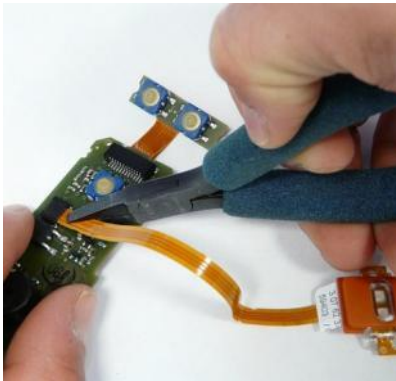
6. Disassembly



1. Carefully remove the ribbon cable from the plug on the motor circuit board.
2. Remove the electronics circuit board.
3. Carefully pull the ribbon cable from the electronics circuit board.
4. Detach the connecting bridge from the ribbon cable.



6. Disassembly



1. Holding the electronic strip by the reinforcement, gently pull it out of the plug.
2. Unclip the LED with the electronic strip from the holder.

NOTE

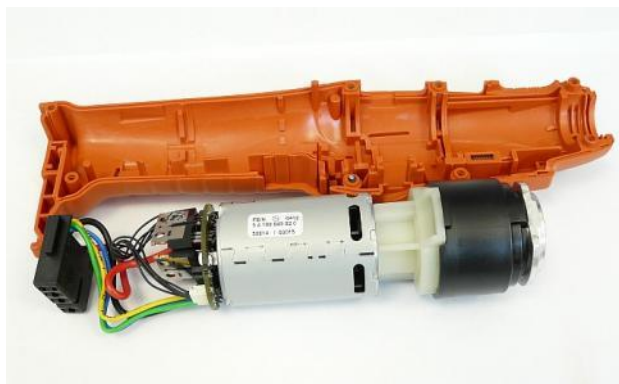
If the electronic strip is defective, the replacement strip must be kinked slightly at the same place. The kink is located between the two notches on the electronic strip.

Tool:

-Flat-nose pliers



6. Disassembly



1. Remove the motor/gearbox unit from the lower section of housing.
2. Remove the bush from the gearbox.
3. Pull the the gearbox from the flange.



6. Disassembly



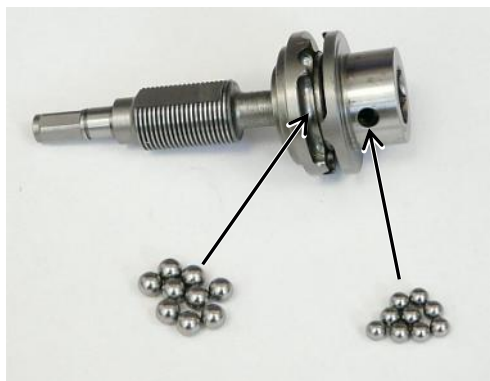
1. Remove the disc from the gearbox.
2. Unscrew the flange.

Tool:

-Torx 10 screwdriver



7. Assembly



1. Lubricate the end of the tool holder and the switch ring (3.5 g).
Push the switch ring and the cam ring onto the tool holder.
2. Feed the small balls (9) into the hole of the outer cam ring completely.

NOTE

The small balls must be inside the cam ring and not lodge in the hole.

3. Insert the large balls (9) into the recesses in the switch ring.
4. Push switch ring onto the cam ring.

Tool:

-Grease
04012301000



7. Assembly



1. Push the spiral spring and ring onto the tool holder.
2. Screw the adjusting ring on tight (left-handed thread).



7. Assembly



1. Pre-tension the spring fully.
2. Push the circlip, the discs and the ball bearing onto the tool holder.
3. Secure a new circlip in the groove of the tool holder.

Tool:

-Torque wrench



7. Assembly



1. Insert the disc(s) into the flange.
2. Push the circlip, the discs and the ball bearing onto the tool holder.
3. Secure a new circlip in the groove of the tool holder.
4. Push the flange onto the clutch.



6. Assembly



1. Insert the circlip.

NOTE

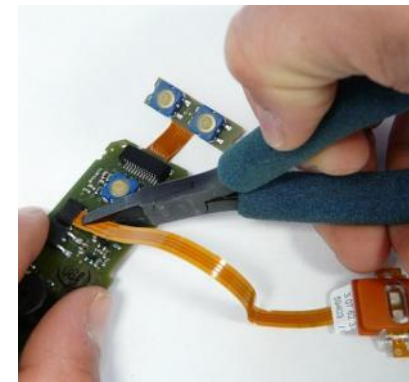
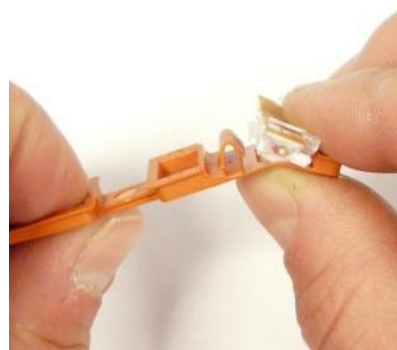
You need modified circlip pliers to fit the circlip.
The upper side of the pliers must be ground flat.

Tool:

-Circlip pliers
(ground)



7. Assembly



NOTE

If the electronic strip is defective, the replacement strip must be kinked slightly at the same place. The kink is located between the two notches on the electronic strip.

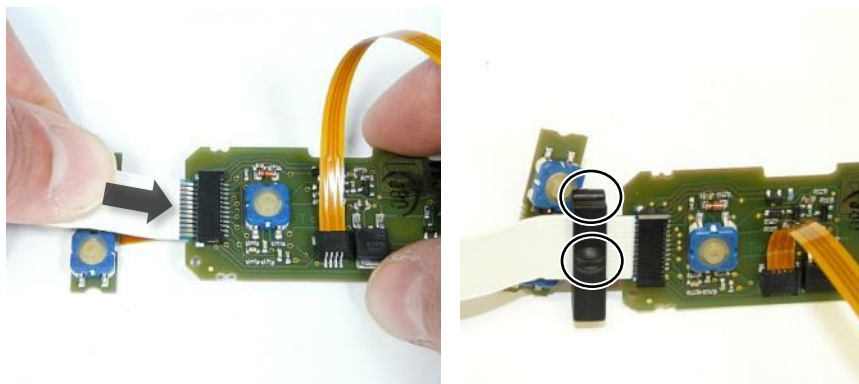
1. Clip the LED with the electronic strip into the holder.
2. Holding the electronic strip by the reinforcement, insert it into the plug.

Tool:

-Flat-nose pliers (without ridges)



7. Assembly



1. Gently attach ribbon cable to the board.
2. Push the connecting bridge onto the ribbon cable.

NOTE

The notches on the contact piece must be at the top and on the operating side.



7. Assembly



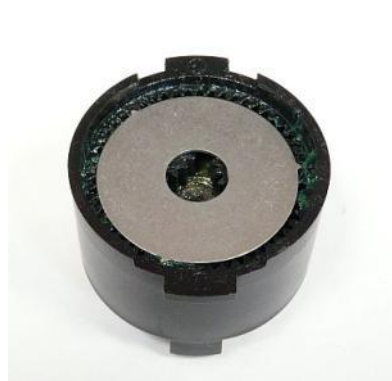
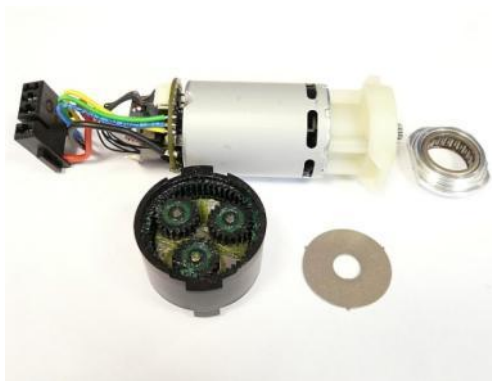
1. Screw the flange to the motor.

Tool:

-Torx 10 screwdriver



7. Assembly



1. Insert the disc into the gearbox so that it is flush.
2. Place the gearbox on the motor.
3. Grease the bush lightly.
4. Place the bush on the gearbox.

Tool:

-Grease

0 40 123 01000



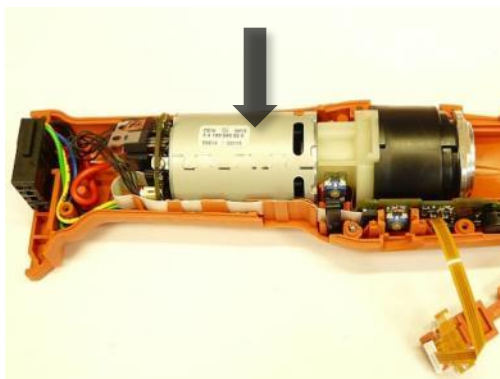
7. Assembly



1. Insert the ribbon cable in the guides and place the electronics board in the lower section of housing.



7. Assembly



1. Place the motor/gearbox unit in the lower section of the housing.

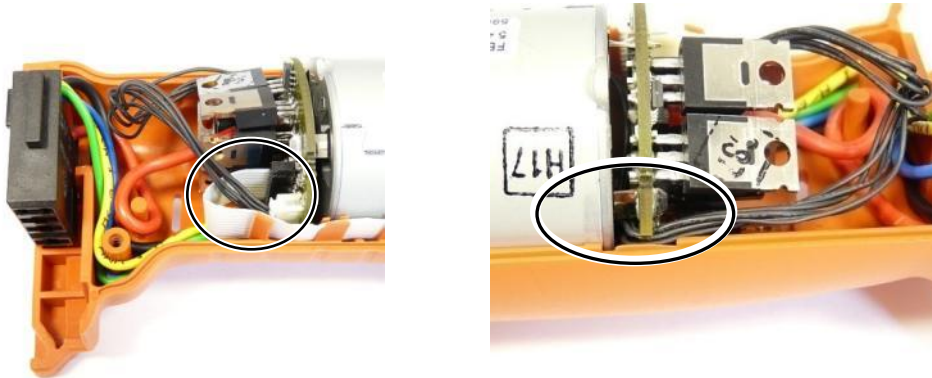
NOTE

Do not trap the cable.

The rounded side of the bush must be on the operating side.



7. Assembly



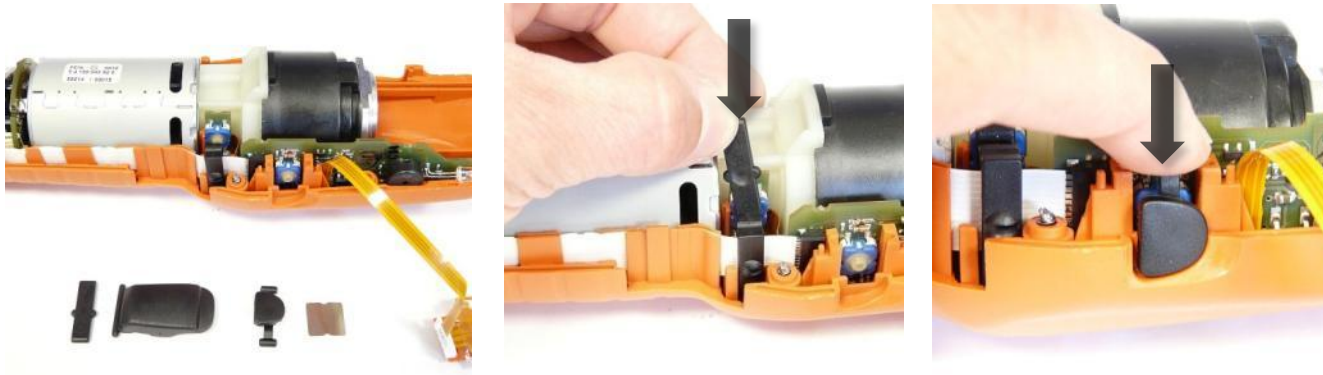
1. Carefully insert the ribbon cable in the plug on the motor circuit board
2. Arrange the cable as shown in the illustration.

Tool:

-Cable hooks



7. Assembly



1. Insert the rocker switch in the housing.

NOTE

The round depression in the rocker switch must be on the operating side. The flat side of the rocker switch faces the motor.

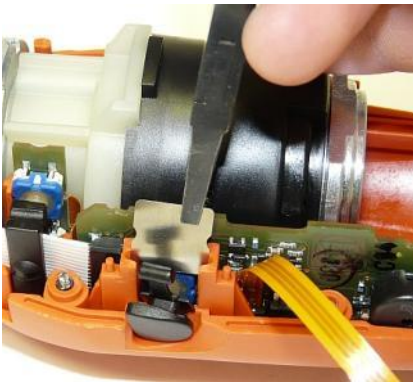
2. Insert the small switch pushbutton in the housing.

Tool:

-Flat-nose pliers



7. Assembly



1. Place the leaf spring in the recess behind the small switch pushbutton.

NOTE

The notches on the leaf spring are located on the side and the concave side of the leaf spring must face the operating side.

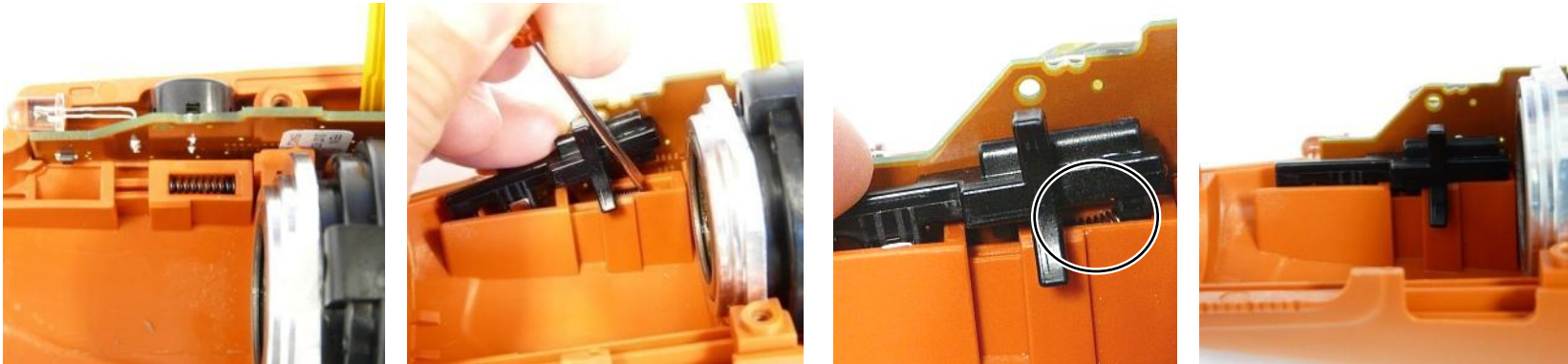
2. Insert the large switch pushbutton in the housing.

Tool:

-Flat-nose pliers



7. Assembly



There is a small spring under the slide switch for switching the torque off. The spring presses the slide switch into its original position.

The spring must sit between the rear projection of the slide switch and the housing wall.

1. Tension the spring with a small screwdriver.
2. Insert the slide switch.

NOTE

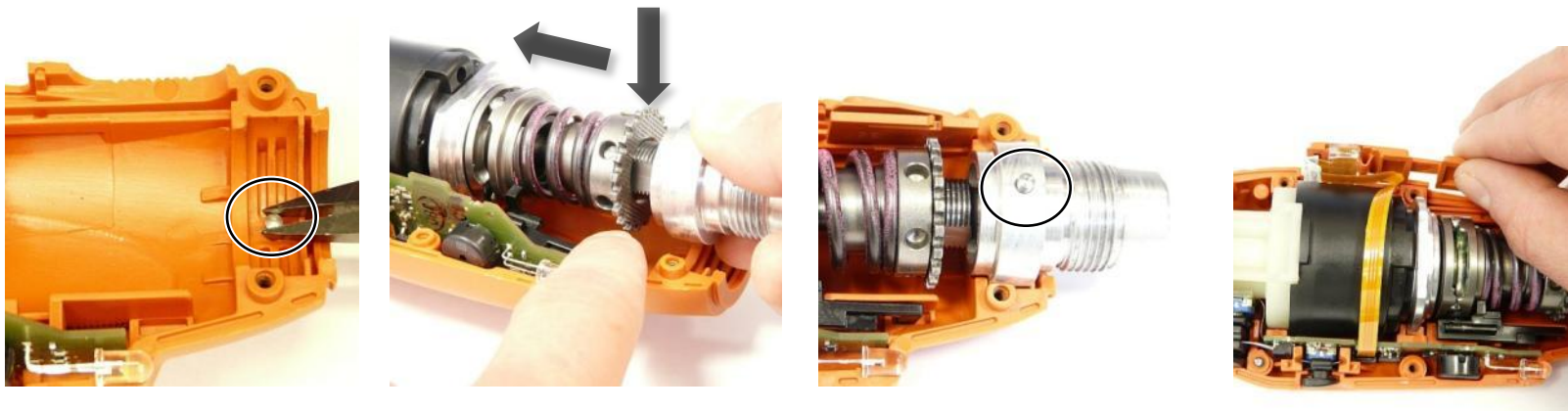
You must hold the slide switch down permanently as you continue with the assembly, otherwise it and the spring will come out again.

Tool:

- Small slotted screwdriver



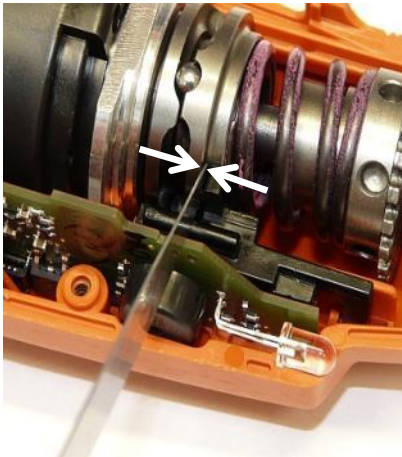
7. Assembly



1. Insert the straight pin into the lower part of housing.
2. Lift the motor slightly and insert the clutch in the bush.
3. Insert the motor with the clutch in the housing.
4. Put the straight pin into the hole in the flange.
5. Arrange the folded electronic strip as shown in the illustration.
6. Insert the holder with the LED in the housing.



7. Assembly



NOTE

If you have fitted a new clutch, you must check the play.

1. Checking the play between the switch ring and the slide switch:
Installation dimension 0.7 ± 0.3 mm.
The installation dimension can be adjusted with the addition or removal of discs in front of and behind the ball bearing.

Tool:

-Feeler gauge



7. Assembly



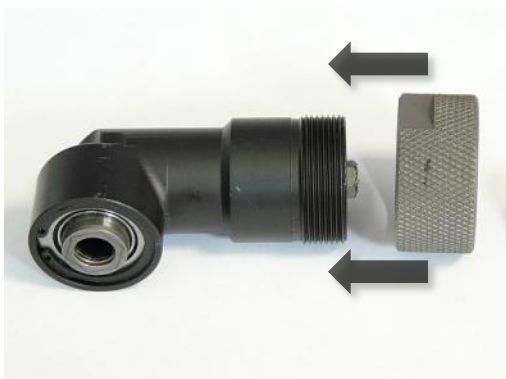
1. Screw on the upper section of the housing.
2. Replace the coding ring.

Tool:

-Torx 15 screwdriver



7. Assembly



1. Hand tighten the retainer nut as far as the stop.
2. Fit the drive.
3. Screw the angled head on as far as the stop.
4. Perform function check.

Tool:

-Open-ended spanner 26 mm



8. Connection diagram

