

# FEIN REPAIR TOOLS



## HFS 27 - 300

### ■ HFS 27-300

- ▶ 200 V / 300 Hz, 2.7 kVA
- ▶ up to 869 series



# FEIN REPAIR TOOLS



## HFS 27 - 300

**The converter HFS 27 – 300 must not be opened by users.  
Repairs to and maintenance work on the converter HFS 17 should  
only be carried out by FEIN or authorised FEIN workshops.**

**When using the HFS 27 – 300, observe the following warning signs:**



**Possible high voltage on accessible parts!**



**Accompanying documents such as operating instructions, general safety instructions and repair instructions must be read!**



**The mains plug must be removed from the socket before any work on the frequency converter and/or power tool!**



**Wait at least 5 minutes (after removing the mains plug) before any work on the frequency converter and/or power tool. The device operates at electrical voltages which can cause death. These voltages are still present even after the device has been switched off or the mains plug removed. You must therefore wait until the capacitors inside the device are discharged after switching off the mains.**



**If all of the above warning signs have been understood and followed, the converter may be opened and maintenance or repair work performed.**

# FEIN REPAIR TOOLS



## HFS 27 - 300

**Repairs to the converters HFS 17 and HFS 27 are limited to individual add-ons. (See following slides). Both repair sets and individual components are available as spare parts. For technical reasons, a new device must always be provided if the electronics are defective. The electronics are sealed to the bottom part of the housing, so repairs are not possible or cost-effective.**

**Before assembly, check the housing cover seal for damage and ensure that the telltale is visible in the switch.**

**Because the hose clip for the rubber grommet has to be destroyed during some repairs, it must be replaced.**

**The special tool (number 6 41 22 113 00 0) is required for this.**

**A professional repair can only be guaranteed with this special tool, because when combined with the hose clip, the rubber grommet serves as a form of traction relief.**

# FEIN REPAIR TOOLS



## HFS 27 - 300

HFS-Kontroll-Leuchte: Farbe, Zeitverhalten	mögliche Ursachen des Abschaltens	empfohlene Abhilfe
rot, dauernd	Schalter am HFS ist ausgeschaltet	Schalter am HFS einschalten
	Über- oder Unterspannung in der Spannungsversorgung	1. HFS ausstecken 2. Spannungsversorgung prüfen
rot, blinkend 1 x ! ! ! ...	Kurzschluss an der Steckdose für Elektrowerkzeug	1. HFS ausschalten 2. Elektrowerkzeug ausstecken und instand setzen lassen
rot, blinkend 2 x !! !! !! ...	Übertemperatur im HFS	1. HFS ausschalten und abkühlen lassen 2. Weiter ohne Überlastung arbeiten
rot, blinkend 3 x !!! !!! !!! ...	elektrische Gefährdung in der dem PSU folgenden Zuleitung oder im HFS	1. HFS ausstecken 2. Mängel beseitigen
	Erdschluss	
rot, blinkend 4 x !!!! !!!! !!!! ...	Schalter am Elektrowerkzeug war vor dem Einschalten des HFS eingeschaltet	1. HFS ausschalten 2. Schalter am Elektrowerkzeug ausschalten
rot, blinkend 5 x !!!!! !!!!! !!!!! ...	HFS war am Ausgang dauernd überlastet	1. HFS ausschalten 2. Weiter ohne Überlastung arbeiten
rot, blinkend 6 x !!!!!! !!!!!!! !!!!!!! ...	interner Fehler am HFS	HFS ausstecken und instand setzen lassen

An LED, which indicates the corresponding status of the converter, is integrated in the converter switch. If the converter or the connected tool is working erratically, you can use the table opposite to find out where the source of the error is located and how to rectify it. Irregularities are indicated by the LED using the signal colours red and green. You will find this table in the operating instructions.

# FEIN REPAIR TOOLS



## HFS 27 - 300

### Available repair sets :

Socket repair set 3 13 40 002 010



When replacing the socket, do not forget the rubber seal and ensure correct connection.  
L1 = black, L2 = grey, L3 = white, SL = yellow/green  
After connecting the cable, **you must** check the direction of rotation.

# FEIN REPAIR TOOLS



## HFS 27 - 300

### Available repair sets :

Grommet repair set 3 13 40 009 010



# FEIN REPAIR TOOLS



## HFS 27 - 300

### Available repair sets :

Power cable with safety switch repair set 3 13 40 008 010



If the power cable is damaged, always use a new repair set (as shown above).

**!!! The damaged cable must NOT be repaired!!!**



# FEIN REPAIR TOOLS



## HFS 27 - 300

Whenever the rubber grommet has to be removed, the hose clip must be destroyed or replaced following a successful repair.

The hose clip can only be installed with the required special tool. (See picture)



**Order number: 6 41 22 113 00 0**



# FEIN REPAIR TOOLS



## HFS 27 - 300



1. Saw open and remove hose clip
2. Disconnect mains cable with safety switch and replace if necessary

### Tools:

- Hacksaw

# FEIN REPAIR TOOLS



## HFS 27 - 300



1. Insert metal lug of hose clip into special tool
2. Slide special tool on to hose clip (end of hose clip must be visible)
3. Firmly clamp end of hose clip
4. Tighten hose clip by turning hand crank

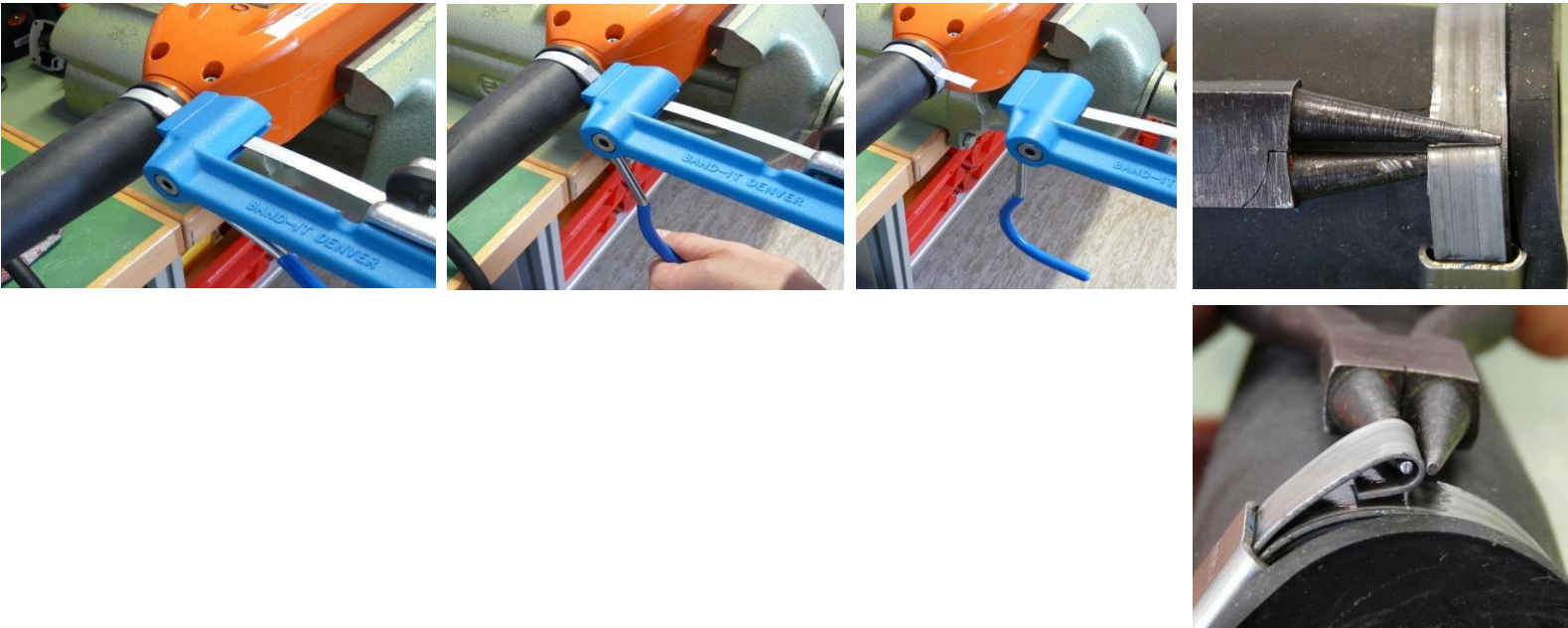
### Tools:

- Special tool

# FEIN REPAIR TOOLS



## HFS 27 - 300



1. After tightening hose clamp, cut off projection with integrated cutting tool.
2. Bend projection of hose clip inwards with round-nosed pliers to reduce the risk of injury. (Sharp edges)

### Tools:

- Special tool
- Round-nosed pliers